

WHEAT VARIETY NEWS FOR 2015



2014/ 2015 Wheat Varieties

At Renwood Farms, we understand how quality seed impacts your yields and profits; we strive to produce quality seed and protect it with advanced seed treatments to ensure your success in every bag, on every acre, every time.

Fall Guide to High-Yield Wheat

- Plant high quality, disease-free USG varieties from Renwood Farms
- Apply **Vizor Plus** or **Vizor 5Z** seed treatment to avoid root rots and control fall insects
- Select varieties with different heading dates to avoid spring freeze
- Select varieties with above average tolerance to scab and a solid disease resistance package
- Burndown at least three weeks prior to planting in no-till fields
- Fertilize with N-P-K-S and zinc

Varieties Available Listed in Order of Planting

- **USG 3315**: a stout wheat variety: USG's best defensive wheat (including scab) with consistent yields and excellent test weight. Strong against soil viruses, rusts, scab, mildew, glume blotch and septoria: **excellent drought tolerance** for lighter soils.
- **USG 3013**: all the traits of 3315 including test weight but a little better yield potential and no tip beard. Top yield in VT OVT Trials in 2013. This is a "work-horse" variety for this maturity.
- **USG 3993**: **New**. Excellent resistance to scab with excellent test weight and superior resistance to soil-borne virus makes this a good choice for heavier, wetter soils.
- **USG 3251**: Top yield and test weight in three-year VT wheat variety trials. Full beard with above average resistance to scab, leaf blotch, mildew and leaf and stripe rust. This is the "race-horse" variety for this maturity.
- **USG 3438**: Sister to 3251, it is a noticeably shorter wheat than 3251 (4" shorter) for less straw and easier soybean planting. Tied for highest yield in 2013 VT OVT. Average test weight. Performs better on well drained soils.
- **USG 3404**: **New**: Powerful wheat with high yields, very good test weight and an outstanding disease package. Top yield in 2014 VA Tech wheat variety trials. **Limited supply for 2015**.
- **USG 3612**: Smooth head with outstanding yield potential and very good test weight. Excellent tolerance to scab: above average resistance to mildew, glume blotch plus leaf and stripe rust: Watch for soil viruses. Not for wet soils.
- **USG 3555**: Most popular USG wheat variety planted with a wide area of adaption. Tied for first place in the VT 2012 OVT Trials: early maturity, short plant height, tolerant to mildew and rust, good scab tolerance. Excellent resistance to WSSMV: top yields in VA Tech State Trials three year average: Virginia Tech and NCSU recommend variety.
- **USG 3523**: **New**: first early-heading wheat released in a long time. Superb disease package with outstanding yields. Top overall yields in VA Tech state wheat trials with 3251 and 3404.
- **Jamestown**: An early-heading, high yielding variety from VA Tech. Very good disease resistance to stripe rust with above-average tolerance to scab.
- **USG 3120**: The number one wheat in the one, two and three-year NCSU wheat trials and tied for first place in the VT 2012 OVT Trials. Similar maturity to Jamestown (early harvest) but yielded 6 bu. /acre more than Jamestown in 2013; a nice beard, good overall virus and disease ratings, including scab tolerance; averaged 80 bu. /acre in VT three-year trials. Watch for soil viruses. Not for heavy or wet soils.

WHEAT FALL 2014

Wheat Varieties



USG 3251: 4" head with full beard for high yields

04/27/2011



USG 3013: to replace 3315: drought tolerant variety with very high yield potential

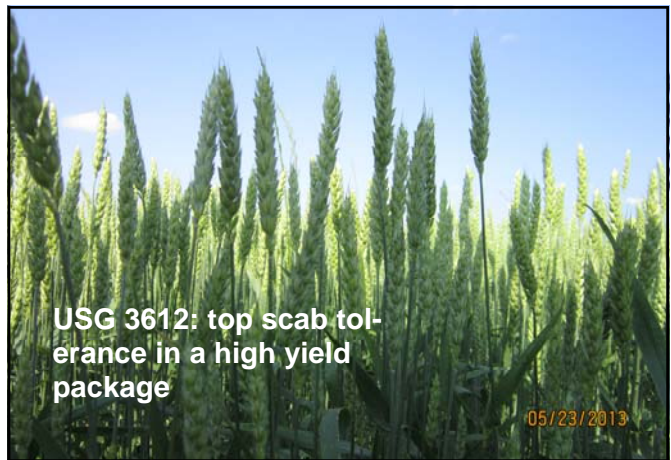


USG 3438 short plant for easier soybean planting



USG 3120: full flower on April 27 in 2011: for early harvest

04/27/2011



USG 3612: top scab tolerance in a high yield package

05/23/2013

Group 1 earliest planting	Group 2 & 3 middle planting	Group 4 last planting
USG 3013	USG 3612	USG 3555
USG 3251	USG 3438	USG 3120
USG 3315	USG 3404 (NEW)	USG 3523 (NEW)
USG 3993 (NEW)		

Planting the right variety in the right planting window is critical to limit spring freeze damage. The table at left shows which variety is recommended for the different planting windows. Planting a Group 4 variety too early enhances chances for spring freeze damage as they grow all winter long regardless of day-length.

WHEAT FALL 2014

Vizor™ : Custom Seed Treatment For Mid-Atlantic Soils

In 2010, Renwood Farms introduced the **Vizor** family of seed treatments. These seed treatments are only available from Renwood Farms. **Vizor** seed treatments are designed to stop the diseases associated with warm and cool soil temperatures so growers can plant when the fields are ready.

Vizor has **four different seed treatments**: two offer protection in cooler soils and two fungicides are added to stop warm-soil fungal diseases.

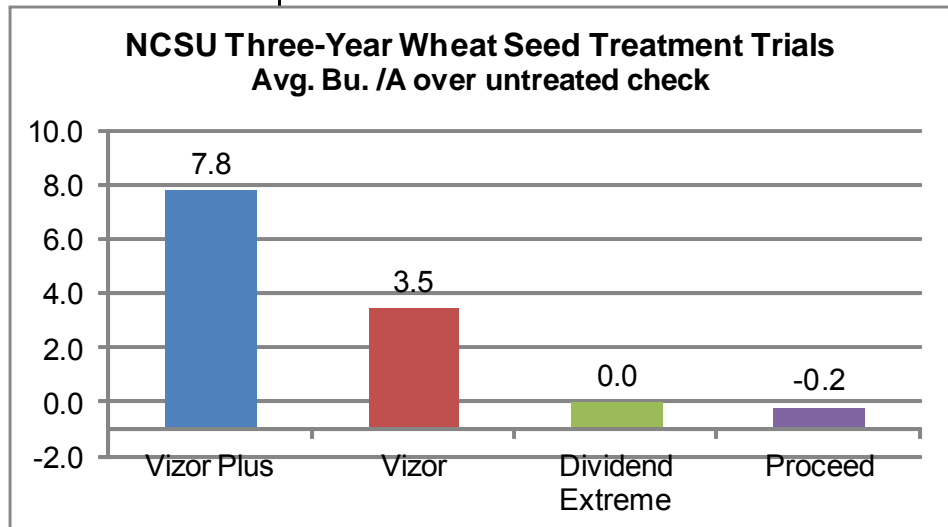
In addition to stopping the disease early, **Vizor** offers extended protection when we get early cool weather but then temperatures warm. The **Vizor** offers 200 days of protection compared to only 40 days for other seed treatments.

The graph above shows NCSU wheat seed treatment plots over a three-year period and found that the **Vizor** treatments were the only treatment that increased yields every year.

Renwood Farms added an option for growers to include **zinc** to their seed. There were several fields last year that tested low or deficient in zinc especially on lighter soils.

Adding zinc has also increased plant manganese levels in field conditions. Zinc seed treatments can prevent sharp eyespot where litter has been used. In 2013, adding zinc to the seed increased yields by 16 bu. /acre in Renwood Farms seed production. For less than \$5/ acre, this can replace foliar materials costing \$20/acre.

As more growers request seed insecticides to prevent aphid (Barley Yellow Dwarf Virus) and Hessian fly damage, it becomes important to understand that some treatments use the lowest rates allowed by the labels which does not guarantee performance in our market.



Vizor	Unique four-way fungicide treatment with higher rates for longer, stronger protection
Vizor Plus	Vizor with insect control for aphids and Hessian fly
Vizor ZN	Vizor with zinc
Vizor 5Z	Vizor Plus with zinc
Vibrance Extreme	For planting in cooler soils
Vibrance Extreme Plus	For planting in cooler soils with insect control for aphids and Hessian Fly

Vizor Plus provides Gaucho 600 at 1.4 ozs. /100 lbs. to provide protection from aphids and Hessian fly all fall. Adding a seed insecticide at the proper rate added 4.3 bu. /acre in NCSU trials even when insect pressure from aphids and Hessian fly were very low.

Renwood Farms offers custom seed treatments including Vibrance Extreme® (Syngenta) and EverGol Energy® (Bayer) as well as growth regulators such as KickStand™ and Awaken ST™. Gaucho can be added to all treatments for insect protection.

RENWOOD FARMS
17303 SANDY POINT RD.
CHARLES CITY, VA 23030



For questions or orders, please call:

Jeff Hula (sales and customer service)
Cell: 804-385-6843
Office: 804-829-2450

Paul Bodenshteyn (agronomist)
Cell: 804-314-7463

Fall 2014 Wheat Variety Characteristics

Variety	Maturity	Height	Head Type	Test Weight	Mildew	Glume Blotch	Scab Tolerance	Soil Virus
USG 3315	ME	T	AL	2	3	3	2	2
USG 3013	ML	M	S	2	2	2	2	2
USG 3993 (new)	ML	M-T	S	2	3	4	2	2
USG 3251	ML	M	A	3	3	4	3	2
USG 3438	ME	S	A	4	3	3	3	4
USG 3404 (new)	M	M	AL	2	2	2	2	NR
USG 3612	M	M	S	2	2	2	2	4
USG 3523 (new)	ME	M	A	2	2	2	3	3
USG 3555	ME	M	AL	2	1	4	2	2
USG 3120	E	S-M	A	2	1	4	3	5

Maturity: E = early harvest, M = medium harvest, L = late harvest

Height: S = short, M = medium, T = tall

Head Type: A = awned (full beard), AL = awnletted (tip beard), S = smooth (no beard)

Test Weight: 1 = best, 9 = worst

Mildew, Septoria, Scab, Virus: 1 = best resistance 9 = least