

WHEAT VARIETY NEWS FOR 2018



IT WORKS!! (Part 1)

Last fall, Renwood Farms introduced the first soft red winter wheat varieties from USG that have **true resistance to Type 2 head scab**. Scab, known as Fusarium Head Blight (FHB), is a fungal pathogen that infects wheat heads. Wheat grain severely impacted by FHB will be shriveled with low test weight and produce below average yields.

Scabby wheat will also be contaminated with a toxin called DON. Wheat with a low test weight and excessive DON lowers farm profits. Wheat with DON levels greater than 1.0 ppm will be rejected for food grade wheat. Wheat with DON levels between 3.0 and 5.0 ppm will be discounted and may be rejected even for feed grade wheat.

Renwood submitted samples to the VDACS Quality Lab in Chesapeake, VA. ***Wheat with the new true scab resistance tested at or below .5 ppm for DON.*** Wheat varieties rated as “moderate scab tolerance” by N.C. State tested an average of 6.9 DON. Neither were sprayed for scab and since wheat flowered earlier than normal, cooler temperatures actually reduced scab pressure.

Producing wheat with true scab resistance means no more at-heading sprays of \$22/acre fungicides for 30% to 50% protection. It also means the potential for storing wheat increases if premiums justify it.

IT WORKS!! (Part 2)

Low test weight and/or low falling numbers are a result of rain or dews occurring after wheat maturity but before harvest. Both events cost growers serious dollars. Based on research, Renwood Farms introduced **Moly-ron™**, an iron, molybdenum, nitrogen and sulfur foliar fertilizer for wheat. In 2017, applied at last topdress, **Moly-ron™** improved falling numbers from an average of 270 to 296. Test weight was not compared. For 2018, Renwood Farms recommends 1 qt. /acre of **Moly-ron™** at last topdress and another 1 qt. /acre with fungicides at boot to preserve test weight and maintain high falling numbers.

Varieties Available Listed in Order of Planting

- **USG 3316:** Full beard with **true resistance to scab**: highly resistant to leaf and head septoria, moderately resistant to soil-borne viruses (heavier soils). Excellent tillering for geese-damage control
- **USG 3833:** Very vigorous tillering wheat with outstanding **stripe rust resistance**. Moderate tolerance to scab with very good test weight and superior resistance to soil-borne virus makes this a good choice for heavier soils. Smooth head.
- **USG 3197:** A stout wheat variety with consistent yields and good test weight: **true resistance to scab** and highly resistant to leaf and head septoria.
- **USG 3404:** Powerful wheat with high yields, very good test weight and an outstanding disease package. Top yield in 2014 and 2015 VA Tech wheat variety trials.
- **USG 3228 (NEW):** An early maturing variety with **true resistance to scab**: superior disease package and smooth and very showy head. Must be managed intensely to produce.
- **USG 3895:** Introduced to compliment USG 3404; selected for lighter peanut, cotton and tobacco soils due to deep rooting: Above average resistance to head septoria plus leaf and stripe rust.
- **USG 3523:** First late planting/early-heading wheat released in a long time. Superb disease package with outstanding yields. Tied in overall yields in VA Tech state wheat trials with USG 3404.

At Renwood Farms, we strive to produce disease-free seed and protect it with advanced seed treatments to ensure your success in every bag, on every acre, each and every year.

WHEAT FALL 2016

Wheat Varieties



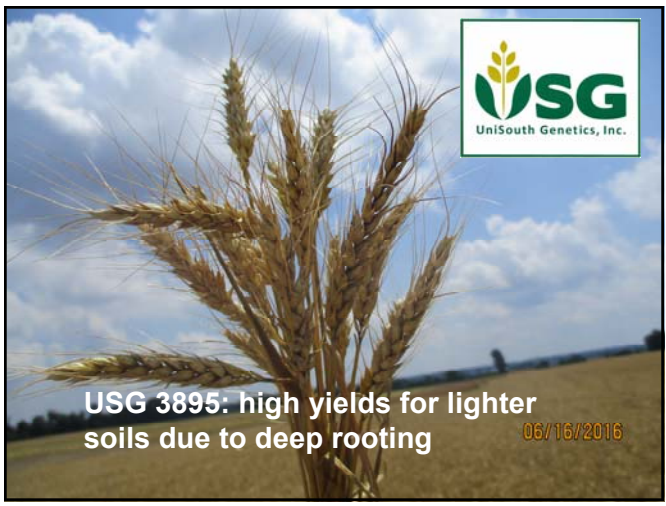
USG 3316: strong scab resistance: very high yields with impressive disease package



USG 3404: very high yields with outstanding disease package



USG 3523: for later planting, high yields and great disease package 06/16/2015



USG 3895: high yields for lighter soils due to deep rooting 06/16/2016

Group 1 earliest planting	Group 2 & 3 middle planting	Group 4 last planting
USG 3316	USG 3404	USG 3523
USG 3833	USG 3895	
USG 3197	USG 3228 (NEW)	

Planting the right variety in the right planting window is critical to limit spring freeze damage. The table at left shows which variety is recommended for the different planting windows. **Planting Group 4 varieties too early enhances chances for spring freeze damage.**

WHEAT FALL 2016

Vizor™ Seed Treatments for the Mid-Atlantic and Southeast

Vizor™ seed treatments are designed to stop the diseases associated with both warm and cool soil temperatures. Seed treatments other than **Vizor™** are usually added to protect in cold soils only.

In addition to stopping diseases early, **Vizor™** offers extended protection. **Vizor™** provides 200 days of protection compared to only 35 days for other seed treatments.

The graph above shows NCSU wheat seed treatment plots over a three-year period. This research showed that the **Vizor™** wheat seed treatments were the only treatment that increased yields every year.

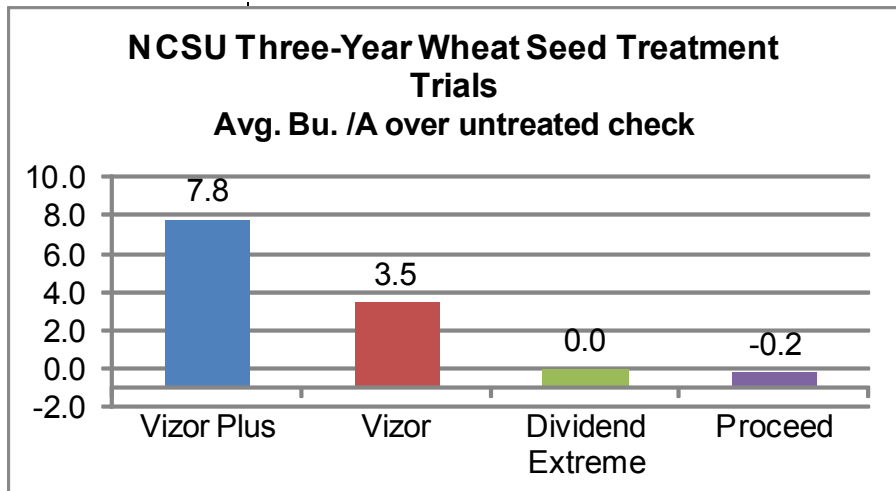
Renwood Farms can include **zinc** on seed. Zinc is needed as a plant nutrient but also stimulates soil microbes to release more nutrients to the plant. **Adding zinc to seed has increased plant manganese levels** in field conditions.

Zinc seed treatments can prevent sharp eyespot fungal infections where litter has been used. In 2013, adding **zinc to the seed increased yields by 16 bu. /acre** in Renwood Farms seed production. Seed zinc has increased wheat yields by 12 bu. /acre or more in Mississippi, North Carolina and Virginia fields.

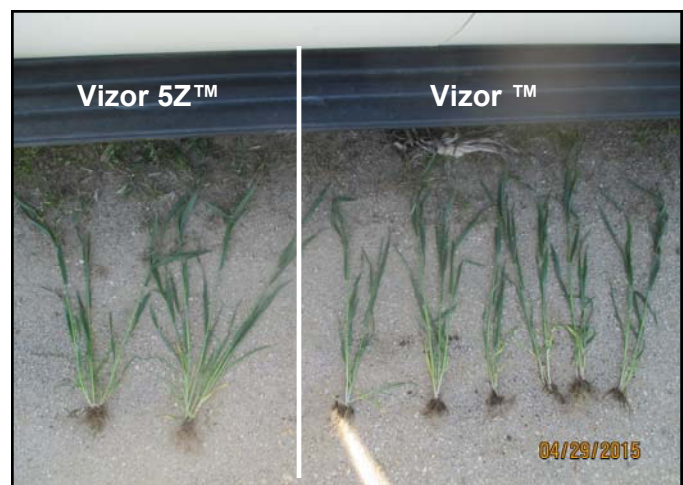
Growers often request seed insecticides to prevent aphids, Hessian fly and soil insect damage but most suppliers use the lowest rates allowed by the labels which lowers performance.

Vizor Plus™ and Vizor 5Z™ provides Gaucho 600 at 1.4 ozs. /100 lbs. to provide protection from aphids, Hessian fly and soil insects all fall.

Adding a seed insecticide at the proper rate added 4.3 bu. /acre in NCSU trials.



Vizor™	Unique multiple fungicide treatment with higher rates for longer, stronger protection
Vizor Plus™	Vizor with insect control for aphids and Hessian fly
Vizor ZN™	Vizor with zinc
Vizor 5Z™	Vizor Plus with zinc



Vizor™ seed treatments are the most effective way to protect against root rots and insect pests. **Vizor 5Z™** adds a critical nutrient package to not only protect but also feed plants to deliver higher yields.

RENWOOD FARMS
 17303 SANDY POINT RD.
 CHARLES CITY, VA 23030



For questions or orders, please contact:

Amber Hula Wilson (sales)

Cell: 757-293-8150

Email: amber@renwoodfarms.com

Jeff Hula (customer service)

Office: 804-829-2450 Cell: 804-385-6843

Paul Bodenstine (agronomist)

Cell: 804-314-7463

Fall 2017 Wheat Variety Characteristics (listed in order of planting)

Variety	Maturity	Height	Head Type	Test Weight	Mildew	Glume Blotch	Scab Tolerance	Soil Virus
USG 3316	ME	M	A	2	4	2	2	3
USG 3833	M	M	S	3	4	3	4	2
USG 3197	ME	M	A	3	3	2	2	5
USG 3404	M	M	A	2	2	2	4	3
USG 3228	E	MT	S	3	4	4	1	2
USG 3895	M	M-S	A	2	NR	2	NR	3
USG 3523	ME	M	A	2	2	2	3	3

Maturity: E = early harvest, M = medium harvest, L = late harvest

Height: S = short, M = medium, T = tall

Head Type: A = awned (full beard), AL = awnletted (tip beard), S = smooth (no beard)

Test Weight: 1 = best, 9 = worst

Mildew, Glume Blotch, Scab, Virus: 1 = best resistance 9 = least

